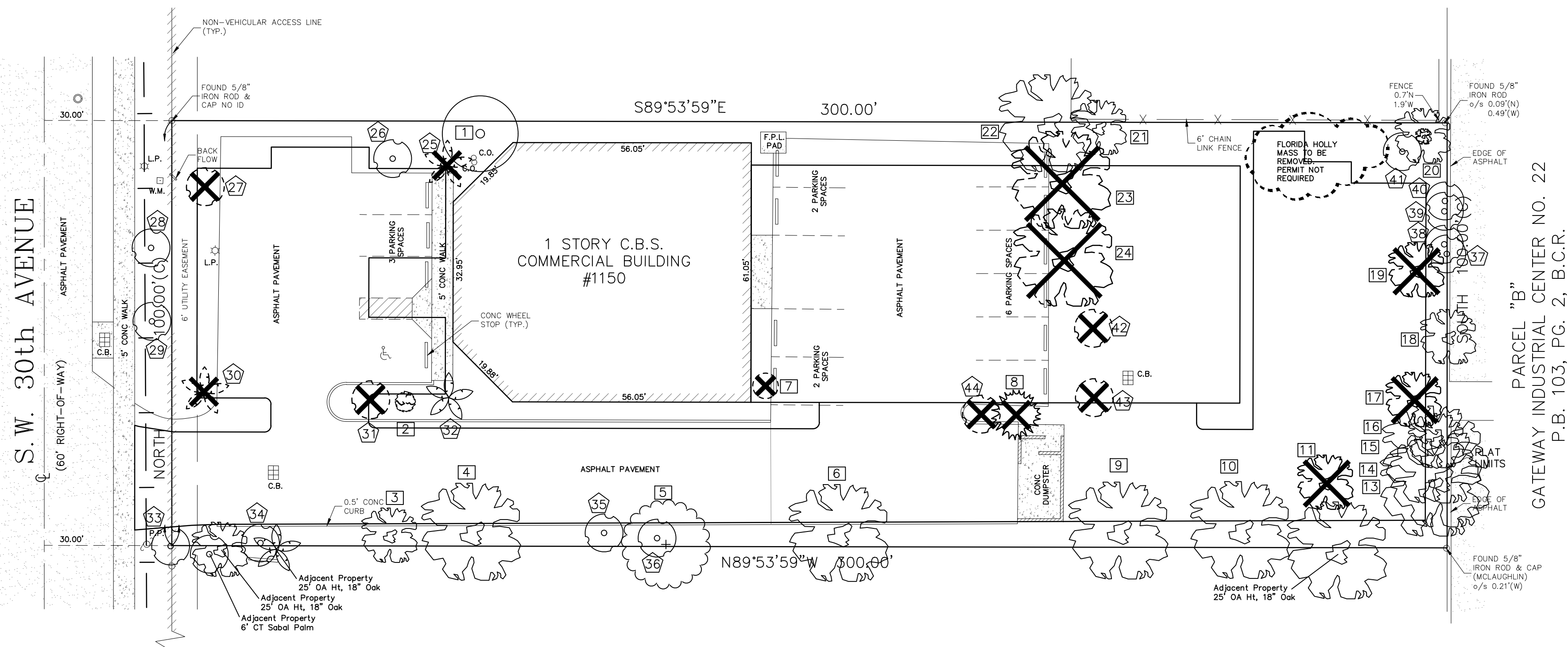
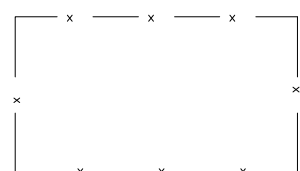


Before Construction Begins,
Contractor to Install and
Maintain Tree Protection
Fencing Around Existing Trees
As Shown. See Existing Tree
Protection Detail This Sheet



Existing Tree List

Appraised VFL Chapter ISA Rule 14-40.303 FL Administrative Code
Replacement Cost Method

Location: 1130 SW 30th Avenue, Pompano Beach, FL

Date: 10/1/2022

Appraiser: Thomas White, ASLA-ISA, Florida ISA Arborist #FL-5248A

Landscape Architect FL #LA1100

ISA Arborist #FL-5248A

Tree #	Species (Botanical Name / Common Name)	Height Feet	Spread Feet	DBH Inches	Condition	Tree Wholesale Cost	X	Multipier	=	Replacement Cost	/ by 28 = Price (per Sq. Inch of Trunk Area)	Trunk Area (In Inches)	=	Appraised Value	X	Diminution %	=	Mitigation Cost	Disposition
1	Mangifera indica / Mango	25	25	10	Fair-Poor	\$125		2.5		\$312.5	\$11.2	78.5		\$876		0.40		\$350	Remain
2	Conocarpus erectus sericeus / Silver Buttonwood	8	5	2	Fair	\$125		2.5		\$312.5	\$11.2	3.1		\$35		0.55		\$19	Remain
3	Quercus virginiana / Live Oak	20	15	12	Fair	\$150		2.5		\$375.0	\$13.4	113.0		\$1,514		0.55		\$833	Remain
4	Quercus virginiana / Live Oak	25	30	12	Fair	\$150		2.5		\$375.0	\$13.4	113.0		\$1,514		0.55		\$833	Remain
5	Bursera simarubra / Gumbo Limbo	25	25	12	Fair-Good	\$150		2.5		\$375.0	\$13.4	113.0		\$1,514		0.65		\$984	Remain
6	Quercus virginiana / Live Oak	30	30	16	Fair	\$150		2.5		\$375.0	\$13.4	201.0		\$2,691		0.55		\$1,480	Remain
7	Carica papaya / Papaya	18	6	4	Fair	\$100		2.5		\$250.0	\$8.9	12.6		\$112		0.55		\$62	Remove
8	Bilophia spp. / Ackee	25	25	6	Fair-Poor	\$125		2.5		\$312.5	\$11.2	28.3		\$315		0.40		\$126	Remove
9	Quercus virginiana / Live Oak	25	25	16	Fair	\$150		2.5		\$375.0	\$13.4	201.0		\$2,691		0.55		\$1,480	Remain
10	Quercus virginiana / Live Oak	25	25	24	Fair	\$150		2.5		\$375.0	\$13.4	452.2		\$6,056		0.55		\$3,331	Remain
11	Quercus virginiana / Live Oak	20	20	16	Fair	\$150		2.5		\$375.0	\$13.4	201.0		\$2,691		0.55		\$1,480	Remove
12	This Space Left Blank Intentionally																		
13	Quercus virginiana / Live Oak	25	20	28	Fair-Good	\$150		2.5		\$375.0	\$13.4	615.4		\$8,243		0.65		\$5,358	Remain
14	Quercus virginiana / Live Oak	25	20	24	Fair-Good	\$150		2.5		\$375.0	\$13.4	452.2		\$6,056		0.65		\$3,936	Remain
15	Quercus virginiana / Live Oak	25	20	30	Fair-Good	\$150		2.5		\$375.0	\$13.4	706.5		\$9,462		0.65		\$6,150	Remain
16	Quercus virginiana / Live Oak	25	20	18	Fair-Good	\$150		2.5		\$375.0	\$13.4	254.3		\$3,406		0.65		\$2,214	Remain
17	Quercus virginiana / Live Oak	25	20	16	Fair-Good	\$150		2.5		\$375.0	\$13.4	201.0		\$2,691		0.65		\$1,749	Remove
18	Quercus virginiana / Live Oak	25	20	16	Fair-Good	\$150		2.5		\$375.0	\$13.4	201.0		\$2,691		0.65		\$1,749	Remain
19	Quercus virginiana / Live Oak	25	20	19	Fair-Good	\$150		2.5		\$375.0	\$13.4	283.4		\$3,795		0.65		\$2,467	Remove
20	Quercus virginiana / Live Oak	25	15	18	Fair-Good	\$150		2.5		\$375.0	\$13.4	254.3		\$3,406		0.65		\$2,214	Remain
21	Quercus virginiana / Live Oak	25	15	5	Fair-Good	\$150		2.5		\$375.0	\$13.4	19.6		\$263		0.65		\$171	Remain
22	Quercus virginiana / Live Oak	25	15	18	Fair-Good	\$150		2.5		\$375.0	\$13.4	254.3		\$3,406		0.65		\$2,214	Remain
23	Quercus virginiana / Live Oak	30	40	18	Fair-Good	\$150		2.5		\$375.0	\$13.4	254.3		\$3,406		0.65		\$2,214	Remove
24	Quercus virginiana / Live Oak	25	35	12	Fair-Good	\$150		2.5		\$375.0	\$13.4	113.0		\$1,514		0.65		\$984	Remove
Diminution %:		Total DBH Removed		85															
81-1.0 (81-100%) Very Good-Specimen																			
61-80 (61-80%) Good-Healthy																			
41-60 (41-60%) Fair																			
21-40 (21-40%) Poor																			
01-20 (1-20%) Very Poor																			
0 Cull, Dead, Cat I or II Invasive																			

Existing Palm List

Appraised Val FL Chapter ISA Rule 14-40.030 FL Administrative Code
Replacement Cost Method for Palms

Location: 1130 SW 30th Avenue, Pompano Beach, FL

Date: 10/1/2022

Appraiser: Thomas White, ASLA-ISA, Florida ISA Arborist #FL-5248A

Landscape Architect FL #LA1100

ISA Arborist #FL-5248A

Tree #	Species (Botanical Name / Common Name)	Height OA In Feet	Spread Feet	CT Feet	DBH Inches	Condition	Wholesale Cost per Foot	X	Multipier	=	Cost per Foot	X	OA Ht.	X	Diminution %	=	Mitigation Cost	Disposition
25	Veitchia montgomeryana / Montgomery Palm	27	12	20	5	Fair-Poor	\$15		2.5		\$37.5		\$1,012.5		0.45		\$456	Remove
26	Sabal palmetto / Cabbage Palm	18	12	12	12	Good	\$15		2.5		\$37.5		\$675.0					Remain
27	Sabal palmetto / Cabbage Palm	18	12	12	12	Good	\$15		2.5		\$37.5		\$675.0		0.65		\$439	Remove
28	Sabal palmetto / Cabbage Palm	18	12	12	12	Good	\$15		2.5		\$37.5		\$675.0					Remain
29	Sabal palmetto / Cabbage Palm	18	12	12	12	Good	\$15		2.5		\$37.5		\$675.0					Remain
30	Veitchia montgomeryana / Montgomery Palm	20	12	25	5	Very Poor	\$15		2.5		\$37.5		\$750.0		0.15		\$113	Remove
31	Sabal palmetto / Cabbage Palm	18	12	12	12	Good	\$15		2.5		\$37.5		\$675.0		0.65		\$439	Remove
32	Veitchia montgomeryana / Montgomery Palm	32	12	25	5	Fair	\$15		2.5		\$37.5		\$1,200.0					Remain
33	Sabal palmetto / Cabbage Palm	15	12	10	12	Good	\$15		2.5		\$37.5		\$562.5					Remain
34	Sabal palmetto / Cabbage Palm	20	12	15	12	Good	\$15		2.5		\$37.5		\$750.0					Remain
35	Sabal palmetto / Cabbage Palm	12	12	6	12	Good	\$15		2.5		\$37.5		\$450.0					Remain
36	Sabal palmetto / Cabbage Palm	10	12	4	12	Good	\$15		2.5		\$37.5		\$375.0					Remain
37	Sabal palmetto / Cabbage Palm	20	12	4	12	Good	\$15		2.5		\$37.5		\$750.0					Remain
38	Sabal palmetto / Cabbage Palm	20	12	4	12	Good	\$15		2.5		\$37.5		\$750.0					Remain
39	Sabal palmetto / Cabbage Palm	20	12	4	12	Good	\$15		2.5		\$37.5		\$750.0					Remain
40	Sabal palmetto / Cabbage Palm	20	12	4	12	Good	\$15		2.5		\$37.5		\$750.0					Remain
41	Sabal palmetto / Cabbage Palm	12	12	6	12	Good	\$15		2.5		\$37.5		\$450.0					Remain
42	Sabal palmetto / Cabbage Palm	23	12	15	18	Good	\$15		2.5		\$37.5		\$862.5		0.65		\$561	Remove
43	Sabal palmetto / Cabbage Palm	15	12	15	10	Good	\$15		2.5		\$37.5		\$562.5		0.65		\$366	Remove
44	Sabal palmetto / Cabbage Palm	20	12	15	15	Good	\$15		2.5		\$37.5		\$750.0		0.65		\$488	Remove
Diminution %:																		
81-1.0 (81-100%) Very Good-Specimen																		
61-80 (61-80%) Good-Healthy																		
41-60 (41-60%) Fair																		
21-40 (21-40%) Poor																		
01-20 (1-20%) Very Poor																		
0 Out, Dead, Cat I or II Invasive																		

Denotes Existing Palms

Denotes Existing Trees



Call 811 or www.sunshine811.com two full
business days before digging to have utilities
located and marked.

Check positive response codes before you dig!

REVISIONS

